

ORIGAMI TEMPLATES FOR 4X4" PIN LOOMS

PERFECTCOUPLE / ZOOM LOOM / WEAVE-IT
REAL SIZE PRINTABLE TEMPLATES

The patterns, diagrams and photographs contained in this document are the property of Florencia Campos Correa. These patterns are available for personal use only. No unauthorized reproduction, in whole or in part, or distribution of these patterns or content is allowed.

If you need any help with my patterns, please contact me:
florencia.campos@ullvuna.cl

©2024 Florencia Campos Correa

www.ullvuna.cl

ASPECTS TO CONSIDER

This file has been created to help you imagine how multiple woven squares can make a finished item, such as a blanket, sweater, coat, basket, scarf and so on.

The patterns are size 4x4" and woven in trios in the Zoom Loom, Weave-It Loom or PerfectCouple set (from Ullvuna).

This file includes:

- 1 pattern that you can weave: Flower Hearts, from the Christmas Joy pattern collection from Ullvuna.
- 2 different kind of templates: the Flower Hearts and plain woven piece, both in several color combinations.

Print the templates that you like, as many times as you want to design your desired object or garment.

- Twist them!
- Fold them!
- Stick them!

Use them in the best way you can to create your woven items!



FIND MORE 4x4" PATTERNS:

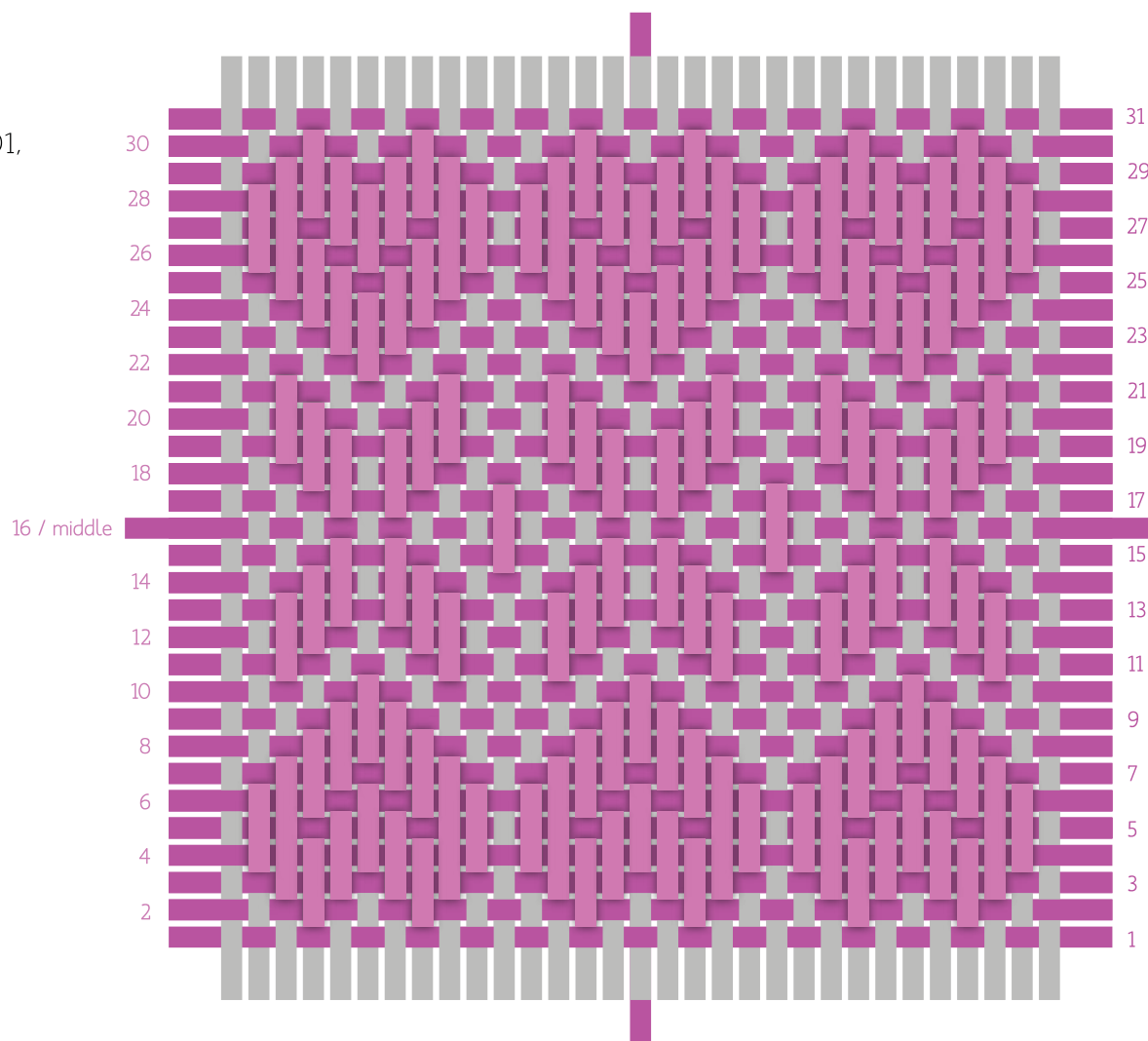
www.ullvuna.cl/weaving-patterns

www.ullvuna.cl/weaving-books

PATTERN

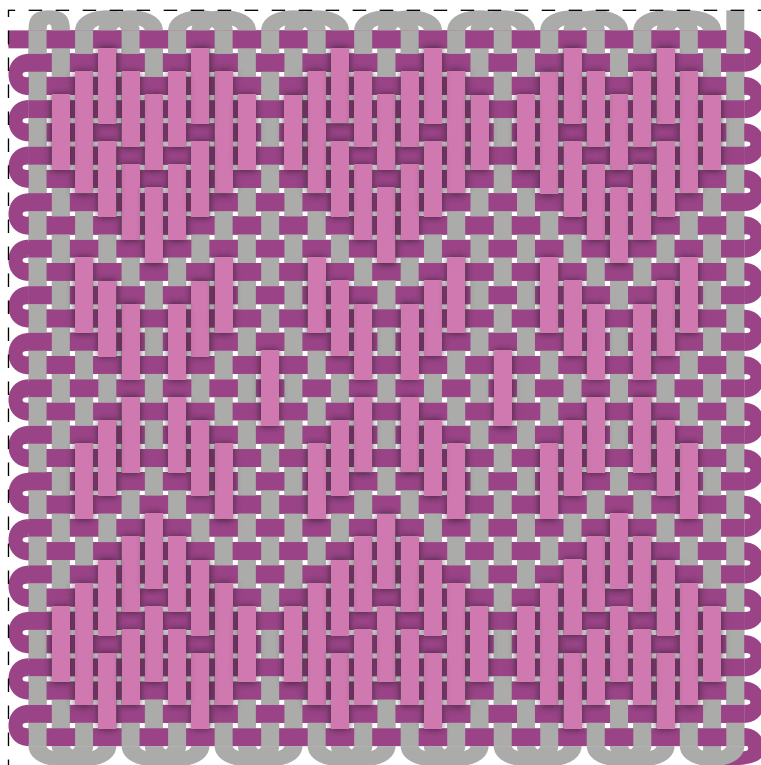
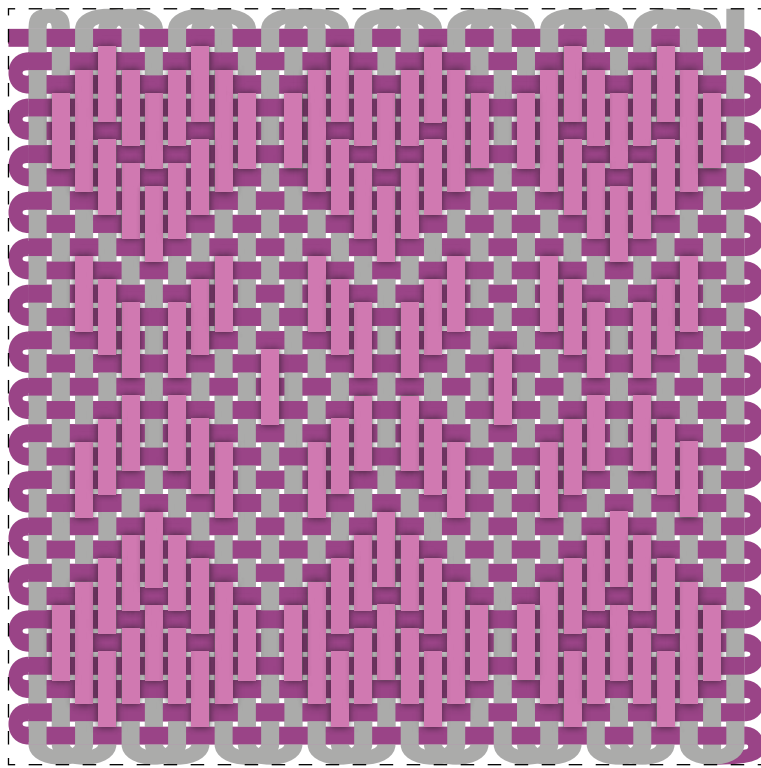
Heart flowers

Row 1: (U) W31 (wrap the pin in the left bottom corner).
Row 2: (O) W to end.
Row 3: W2, U3, O1, U3, W3, U3, O1, U3, W3, U3, O1, U3, W2.
Row 4: O1, U9, O1, U9, O1, U9, O1.
Row 5: U3, O1, U3, O1, U5, O1, U3, O1, U5, O1, U3, O1, U3.
Row 6: O1, U3, O1, U1, O1, U3, O1, U3, O1, U1, O1, U3, O1, U3, O1, U1, O1, U3, O1.
Row 7: W2, U3, O1, U3, W3, U3, O1, U3, W3, U3, O1, U3, W2.
Row 8: W3, U5, W5, U5, W5, U5, W3.
Row 9: W4, U3, W7, U3, W7, U3, W4.
Row 10: W to end.
Row 11: W to end.
Row 12: O1, U3, W3, U3, O1, U3, W3, U3, O1, U3, W3, U3, O1, U3, W3, U3, O1.
Row 13: W2, U3, O1, U3, W3, U3, O1, U3, W3, U3, O1, U3, W2.
Row 14: W3, U5, W5, U5, W5, U5, W3.
Row 15: W to end.
Row 16: W9, U3, W7, U3, W9.
Row 17: W to end.
Row 18: W3, U5, W5, U5, W5, U5, W3.
Row 19: W2, U3, O1, U3, W3, U3, O1, U3, W3, U3, O1, U3, W2.
Row 20: O1, U3, W3, U3, O1, U3, W3, U3, O1, U3, W3, U3, O1, U3, W3, U3, O1.
Row 21: W to end.
Row 22: W to end.
Row 23: W4, U3, W7, U3, W7, U3, W4.
Row 24: W3, U5, W5, U5, W5, U5, W3.
Row 25: W2, U3, O1, U3, W3, U3, O1, U3, W3, U3, O1, U3, W2.
Row 26: O1, U3, O1, U1, O1, U3, O1, U3, O1, U1, O1, U3, O1, U3, O1, U1, O1, U3, O1.
Row 27: U3, O1, U3, O1, U5, O1, U3, O1, U5, O1, U3, O1, U3.
Row 28: O1, U9, O1, U9, O1, U9, O1.
Row 29: W2, U3, O1, U3, W3, U3, O1, U3, W3, U3, O1, U3, W2.
Row 30: W to end.
Row 31: W to end.



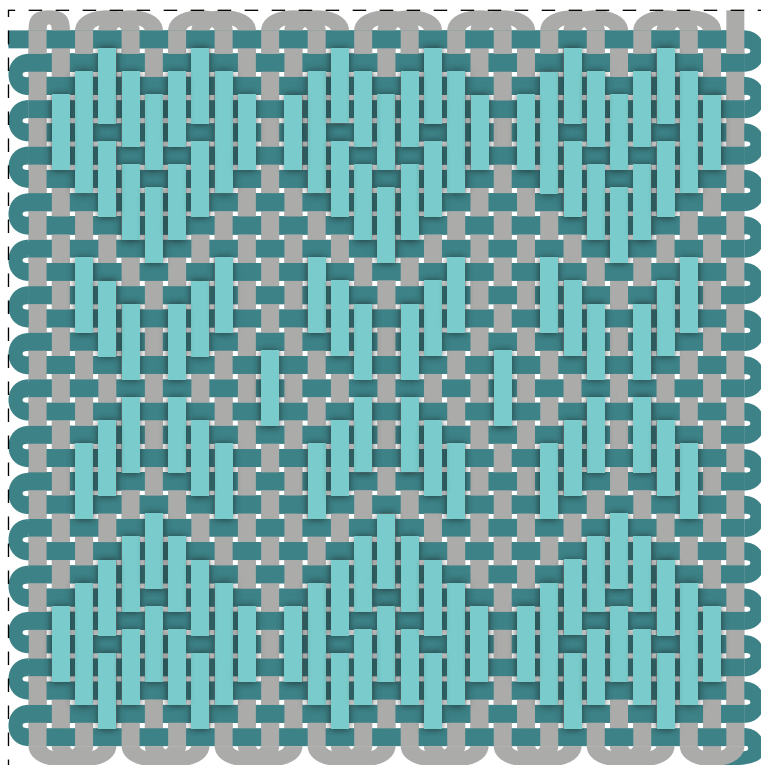
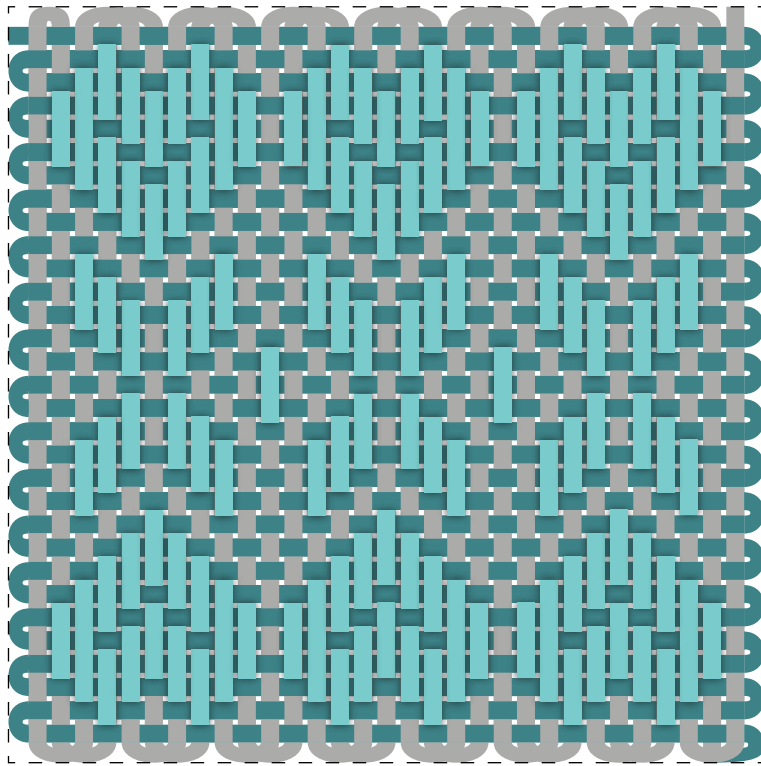
TEMPLATE 1 / Color Mix 1

Print in **Real Size** / Cut the squares in the dashed lines



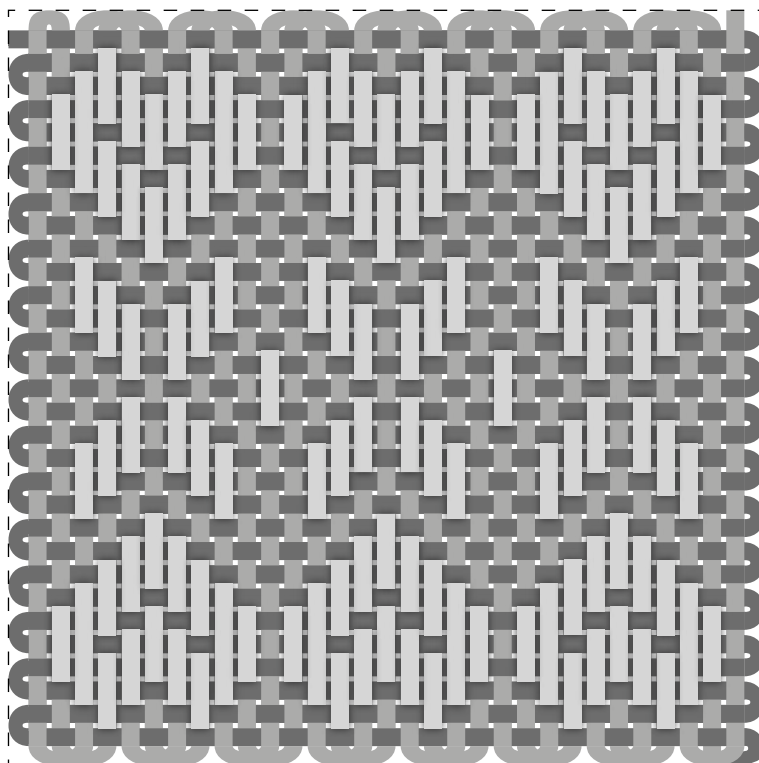
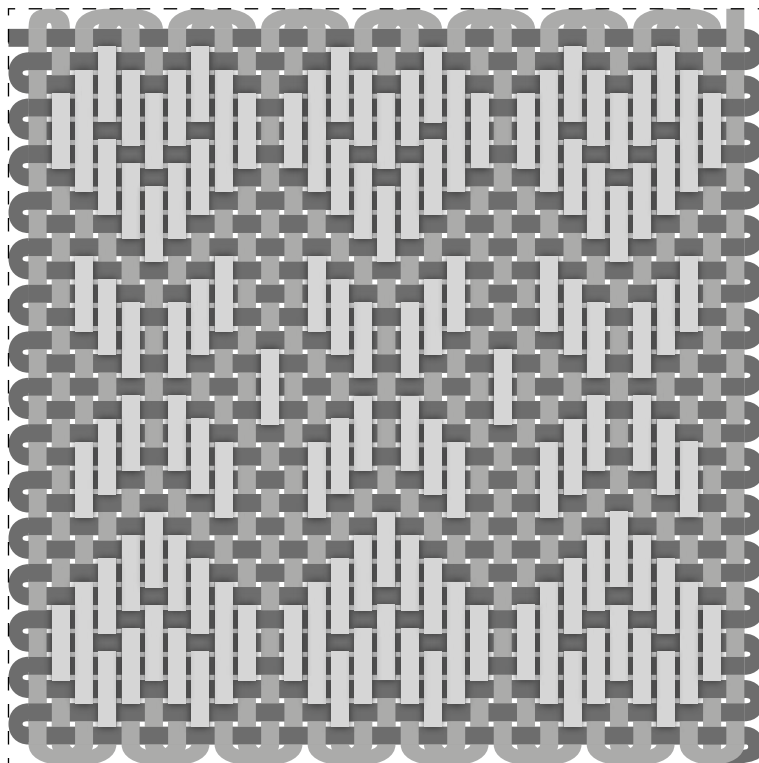
TEMPLATE 1 / Color Mix 2

Print in **Real Size** / Cut the squares in the dashed lines



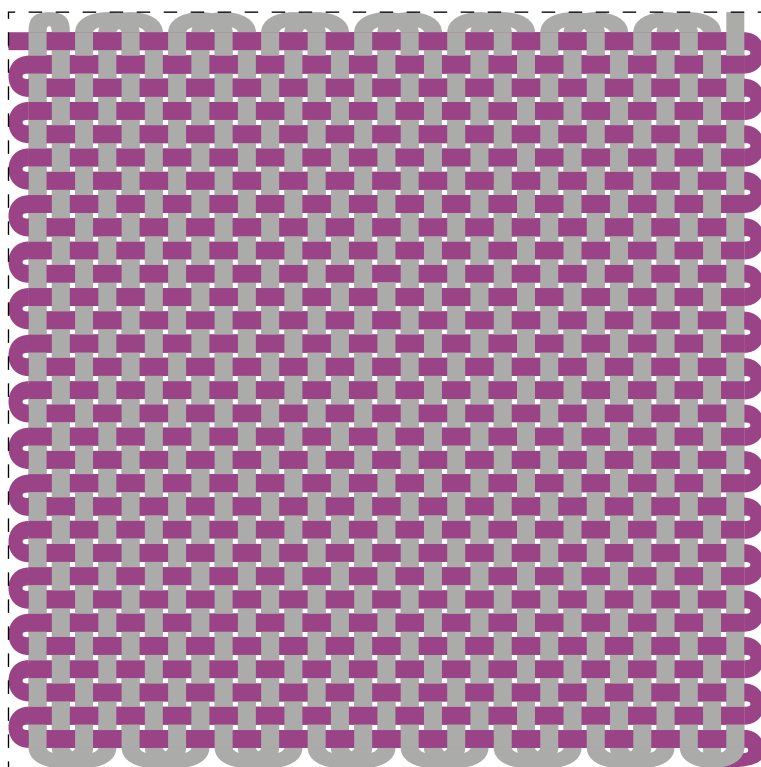
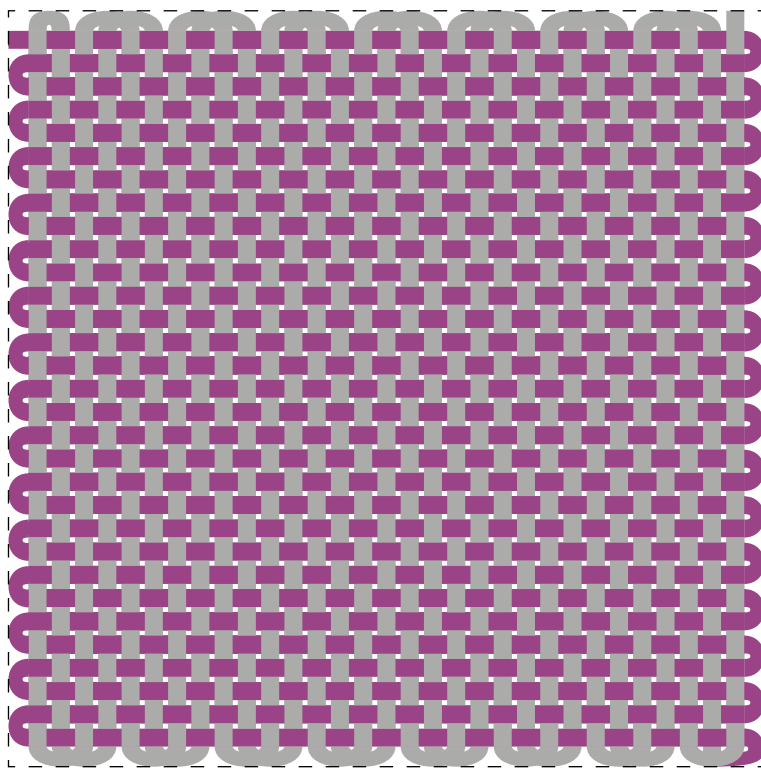
TEMPLATE 1 / Color Mix 3

Print in **Real Size** / Cut the squares in the dashed lines



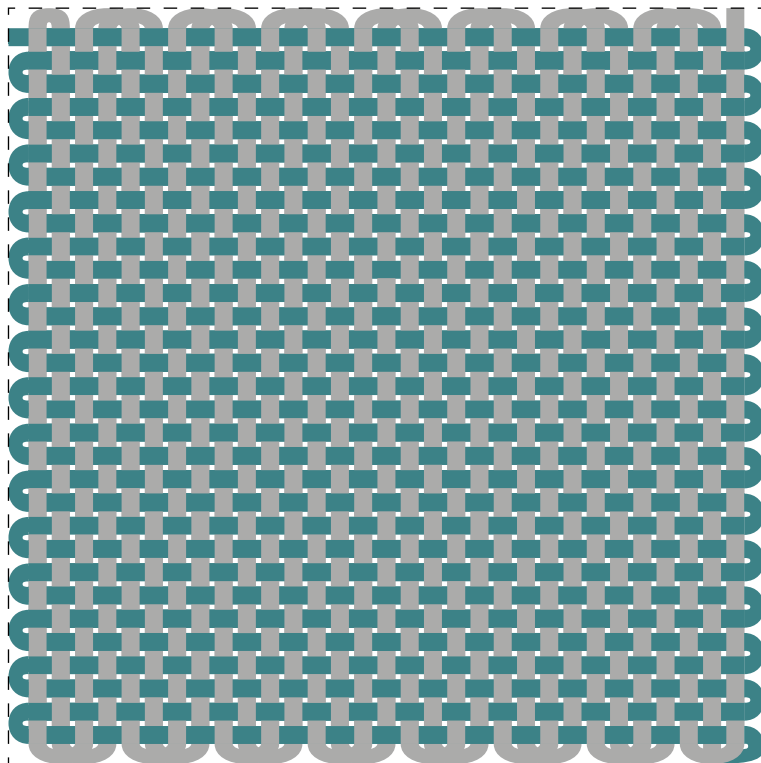
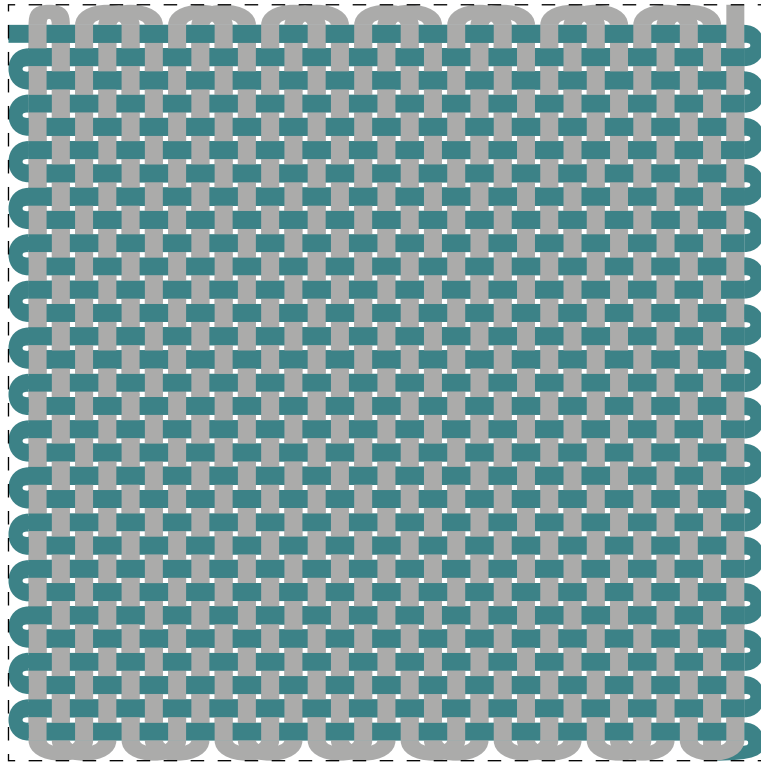
TEMPLATE 2 / Color Mix 1

Print in **Real Size** / Cut the squares in the dashed lines



TEMPLATE 2 / Color Mix 2

Print in **Real Size** / Cut the squares in the dashed lines



TEMPLATE 2 / Color Mix 3

Print in **Real Size** / Cut the squares in the dashed lines

